



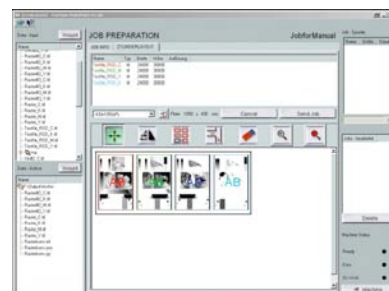
The machine for medium format plate production



Flexolaser "medio" machines come in three power versions: Budget, Productivity and Speed. Depending on which power version is selected, the machine is available as quad or eight beam version.

Flexolaser devices are not stand-alone machines; they operate in a network environment. Flexolaser writes to the LAM layer from finished 1-bit TIFF files received from any prepress system – either in-house or supplied. Resolution is fixed at 2540 dpi. The Flexolaser CPU and the included Multiplate software manage the supplied files and operate the machine. Flexolaser machines can be set up to process plates only or sleeves only. On the assumption that in the round and sleeve technology is the future of quality

Flexo printing, there is also a hybrid version that process both and the change from plates to patented Quick Sleeve or vice versa takes just a few minutes. Sleeve-only or plate-only machines can be retrofitted to hybrid Quick Sleeve configuration at any time.



Technical Data

	FL piccolo / fx	FL medio	FL largo / Xlargo
Recording technique:	Rotating external drum, plate held by vacuum		
Printing plates:	Digital exposable photopolymer flexo printing plates and sleeves, all thicknesses, all brands		
Drum circumference:			
total:	640 mm	≤ 930 mm	≤ 1320 mm
exposable:	635 mm	≤ 920 mm	≤ 1300 mm
Drum width:			
total:	790 mm	≤ 1300 mm	≤ 1700 mm / ≤ 2100 mm Xlargo
exposable:	762 mm	≤ 1270 mm	≤ 1650 mm / ≤ 2000 mm Xlargo
Light source:	10/20/35 W Fiber Laser	20/35/50 W Fiber Laser	35/50 W Fiber Laser
Resolution:	(2032), 2540 dpi	(2032), 2540 dpi	(2032), 2540 dpi
Laser spot size:	≥ 13 μm	≥ 13 μm	≥ 13 μm
Line screen:	≤ 80 Lines/cm (≤ 200 lpi)	≤ 80 Lines/cm (≤ 200 lpi)	≤ 80 Lines/cm (≤ 200 lpi)
Imaging speed:			
Budget:	≤ 1.0 m ² /h @ 2032 dpi	≤ 2.0 m ² /h @ 2032 dpi	≤ 3.0 m ² /h @ 2032 dpi
Productivity:	≤ 2.0 m ² /h @ 2032 dpi	≤ 3.0 m ² /h @ 2032 dpi	≤ 5 m ² /h @ 2032 dpi
Speed:	≤ 3.5 m ² /h @ 2032 dpi	≤ 5 m ² /h @ 2032 dpi	≤ 5 m ² /h @ 2032 dpi
Power supply:	3x380 V≈, 10 A	3x380 V≈, 10 A	3x380 V≈, 10 A
Dimensions:	1.70 x 0.95 x 1.20 m	2.50 x 0.95 x 1.35 m	3.00 x 0.95 x 1.50 m
Weight:	800 kg	1500 kg	2000 kg
Humidity:	≤ 80 %, non condensing	≤ 80 %, non condensing	≤ 80 %, non condensing
Operating temperature.:	15 °C – 28 °C	15 °C – 28 °C	15 °C – 28 °C
Exhaust air	yes	yes	yes
Sleeve Version:	yes	yes	yes
Hybrid Version:	no	yes	yes
Input Data Format:	Separated 1 bit TIFF	Separated 1 bit TIFF	Separated 1 bit TIFF
Network/Internet:	yes	yes	yes
MultiPlate:	yes	yes	yes

